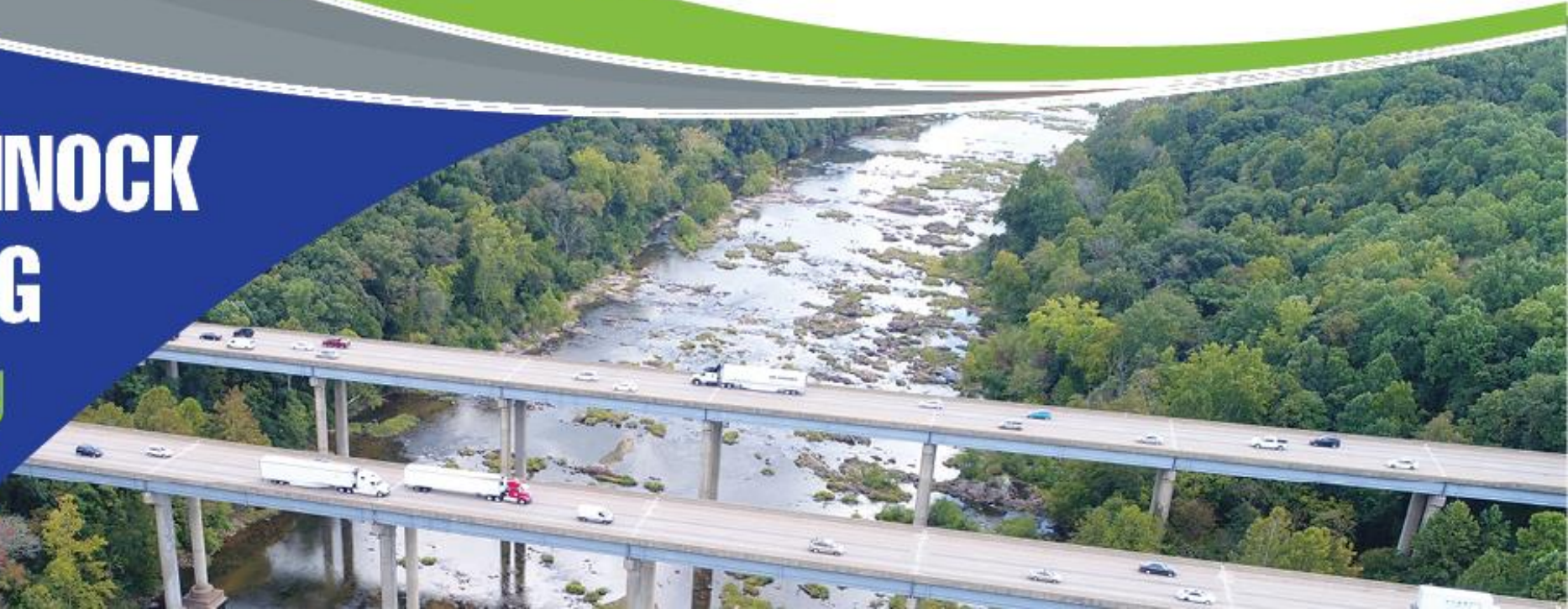


# I-95 RAPPAHANNOCK RIVER CROSSING

City of Fredericksburg  
Spotsylvania County  
Stafford County



## Pardon Our Dust Public Information Meeting

Robert G. Ridgell, P.E.

Virginia Department of Transportation, Fredericksburg District  
Area Construction Engineer

July 12, 2018

# Project Team and Leadership



**Virginia Department of Transportation,  
Fredericksburg District  
Robert G. Ridgell, P.E.**



**Wagman Heavy Civil, Inc.  
David Lyle, DBIA**



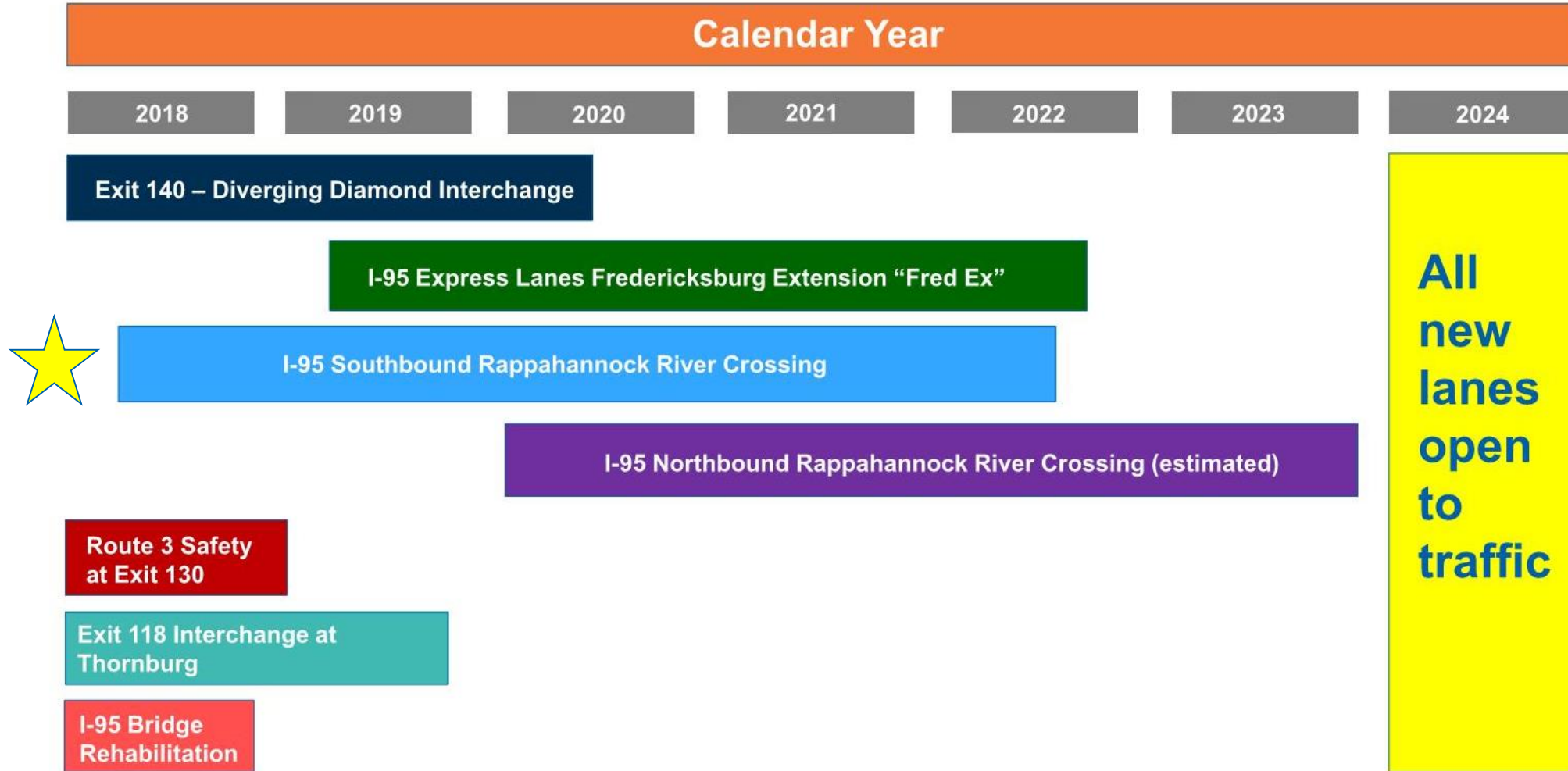
**Johnson, Mirmiran and Thompson, Inc.  
Rodney Hayzlett, P.E.**

# Agenda

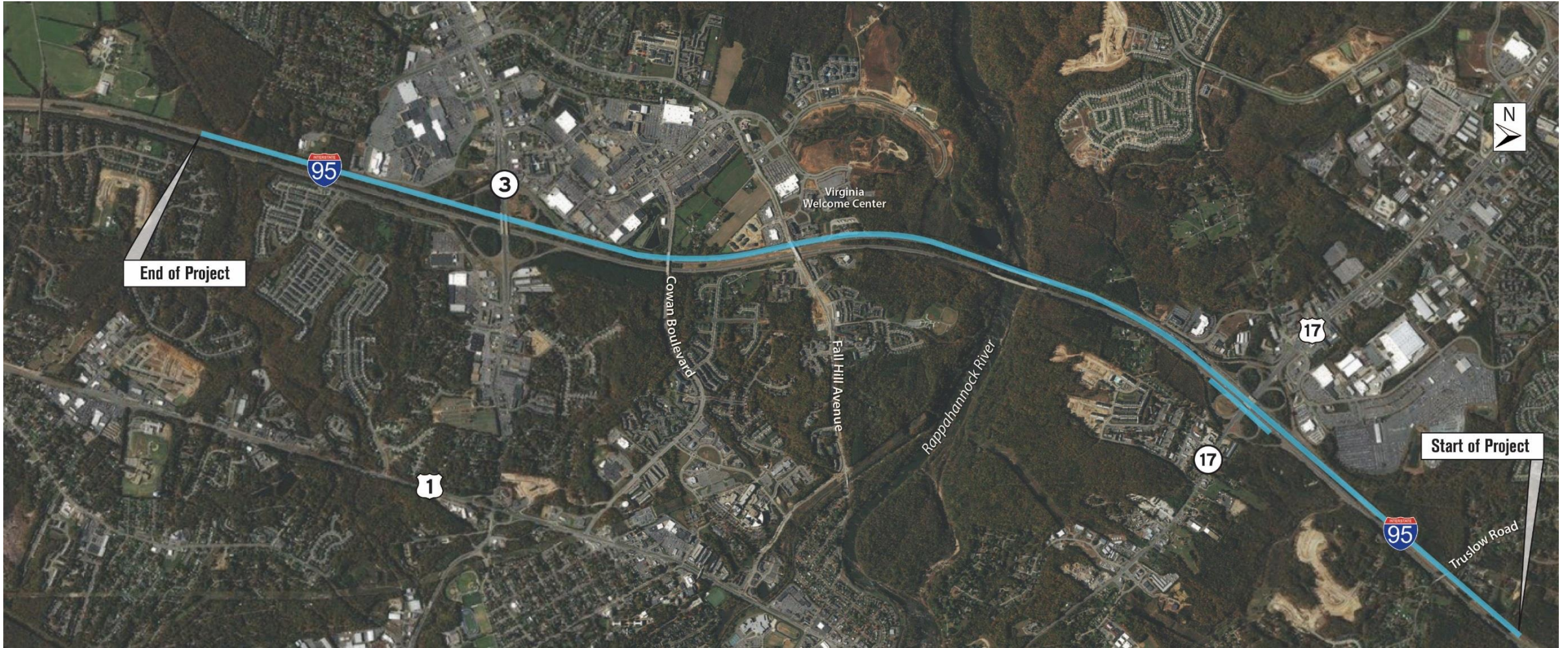
- **I-95 Improvement Projects**
- **Project Location and Fast Facts**
- **Project Improvements**
- **Project Schedule**
- **What to Expect During Construction**
- **Questions and Answers**
- **Stay Informed**
- **Contact Information**



# I-95 Improvement Projects



# Project Location



# Project Fast Facts

- **The project seeks to reduce I-95 congestion by:**
  - **doubling I-95 southbound capacity in the Fredericksburg area**
  - **dividing traffic into separate lanes for the Route 3 and Route 17 interchanges, and general purpose lanes**
- **Adds three additional lanes of I-95 southbound in the existing I-95 median beginning just north of Route 17 and ending just south of Route 3, including new Rappahannock River Crossing**
- **Includes interchange ramp modifications at Route 3 and Route 17**
- **Replaces existing structurally deficient SB and NB I-95 bridges over Route 17 and improves height restrictions on Route 17 under I-95**
- **Contract Value: \$101.6 Million**

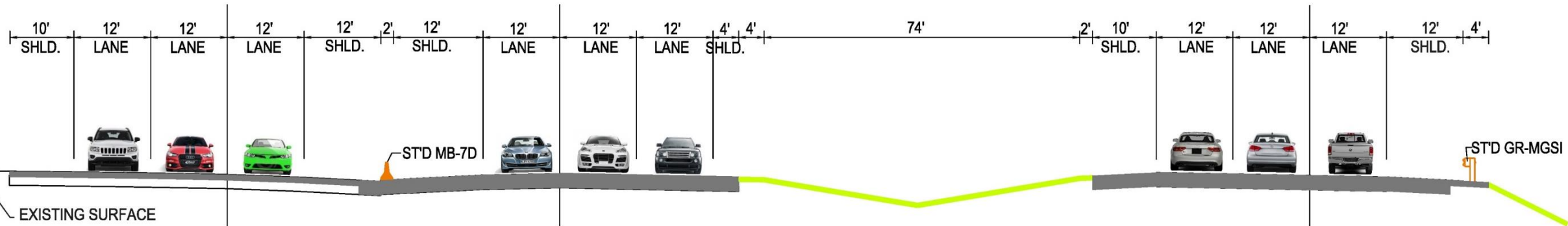
# North of River Improvements

## I-95 SOUTHBOUND GENERAL PURPOSE (GP) LANES AND COLLECTOR-DISTRIBUTOR (CD) LANES IMPROVEMENTS SECTION NORTH OF THE RAPPAHANNOCK RIVER

I-95 SB CD LANES  
(ROUTE 17 AND ROUTE 3 TRAFFIC)  
MILL & OVERLAY OR NEW CONSTRUCTION

I-95 SB GP LANES  
(THROUGH TRAFFIC)  
NEW CONSTRUCTION

I-95 NB LANES  
NEW CONSTRUCTION



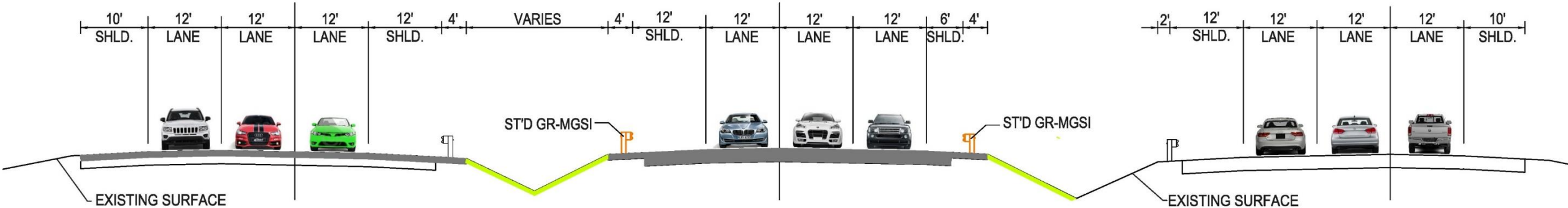
# South of River Improvements

## I-95 SOUTHBOUND GENERAL PURPOSE LANES AND COLLECTOR-DISTRIBUTOR LANES IMPROVEMENTS SECTION SOUTH OF THE RAPPAHANNOCK RIVER

I-95 SB CD LANES  
(ROUTE 17 AND ROUTE 3 TRAFFIC)  
MILL & OVERLAY

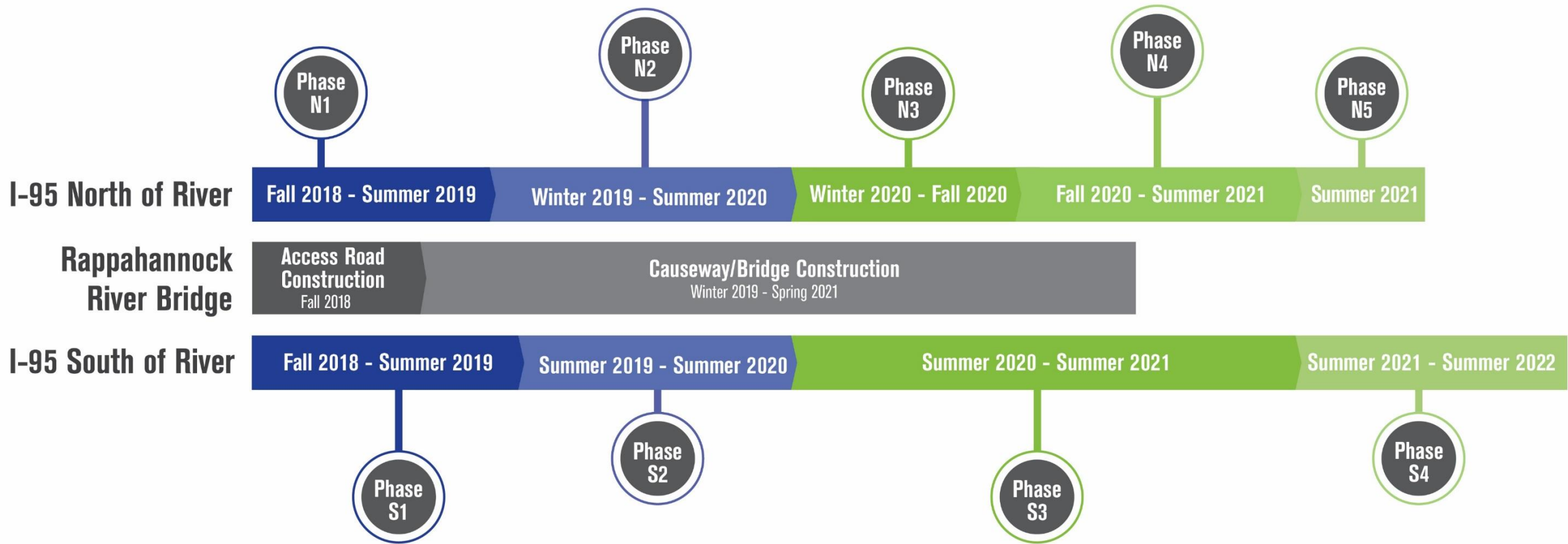
I-95 SB GP LANES  
(THROUGH TRAFFIC)  
NEW CONSTRUCTION

I-95 NB LANES





# Project Schedule



# What to Expect During Construction:

## Year by Year

# What to Expect During Construction: August 2018 – Summer 2019

## Southbound I-95:

- Periodic lane closures at night
- Temporary median barrier along inside shoulder

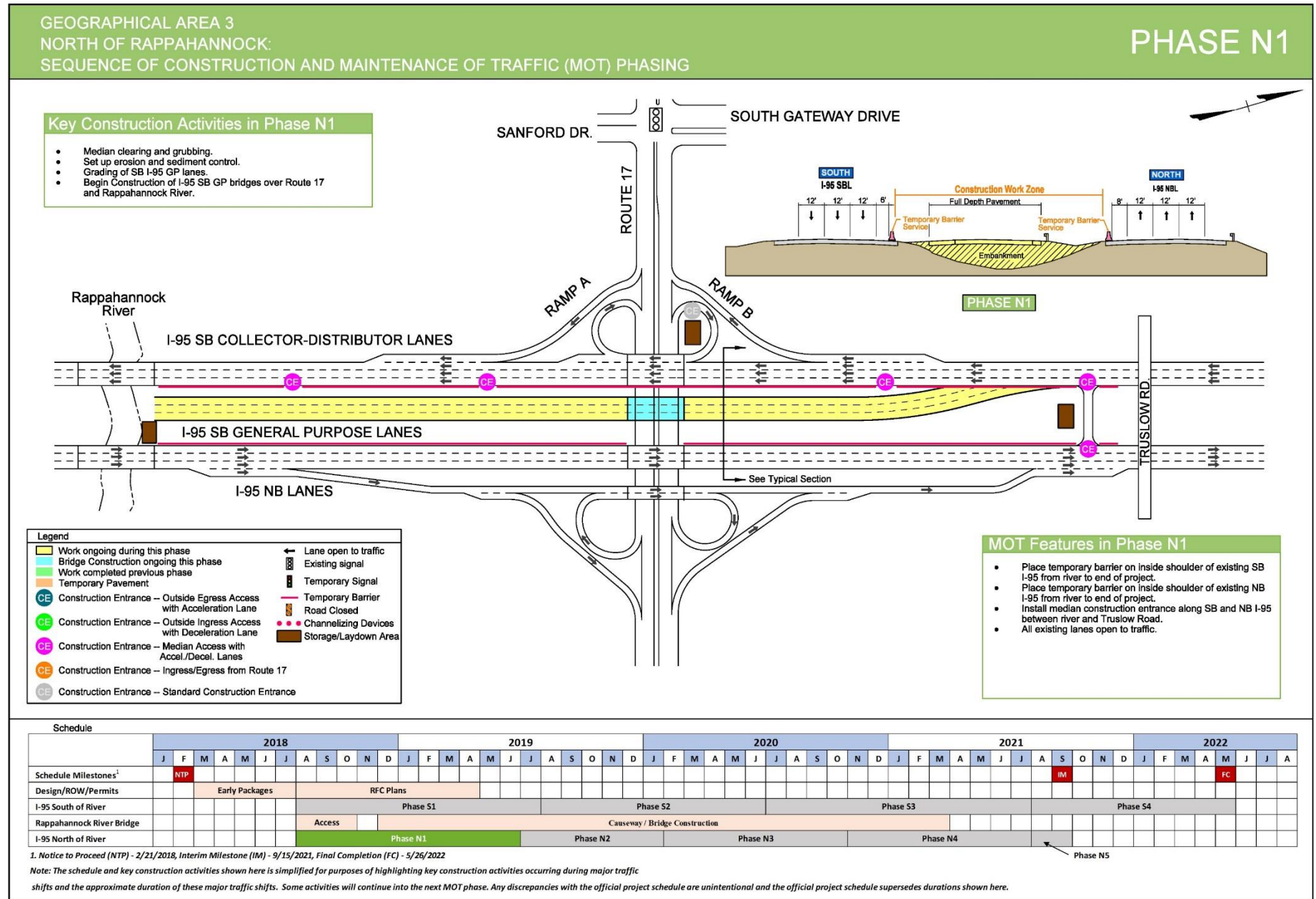
## Northbound I-95:

- Periodic lane closures at night
- Temporary median barrier along inside shoulder

## Safety Rest Area and Welcome Center:

- Open to traffic entire project

# North of the River, Phase 1 (Fall 2018 – Summer 2019)



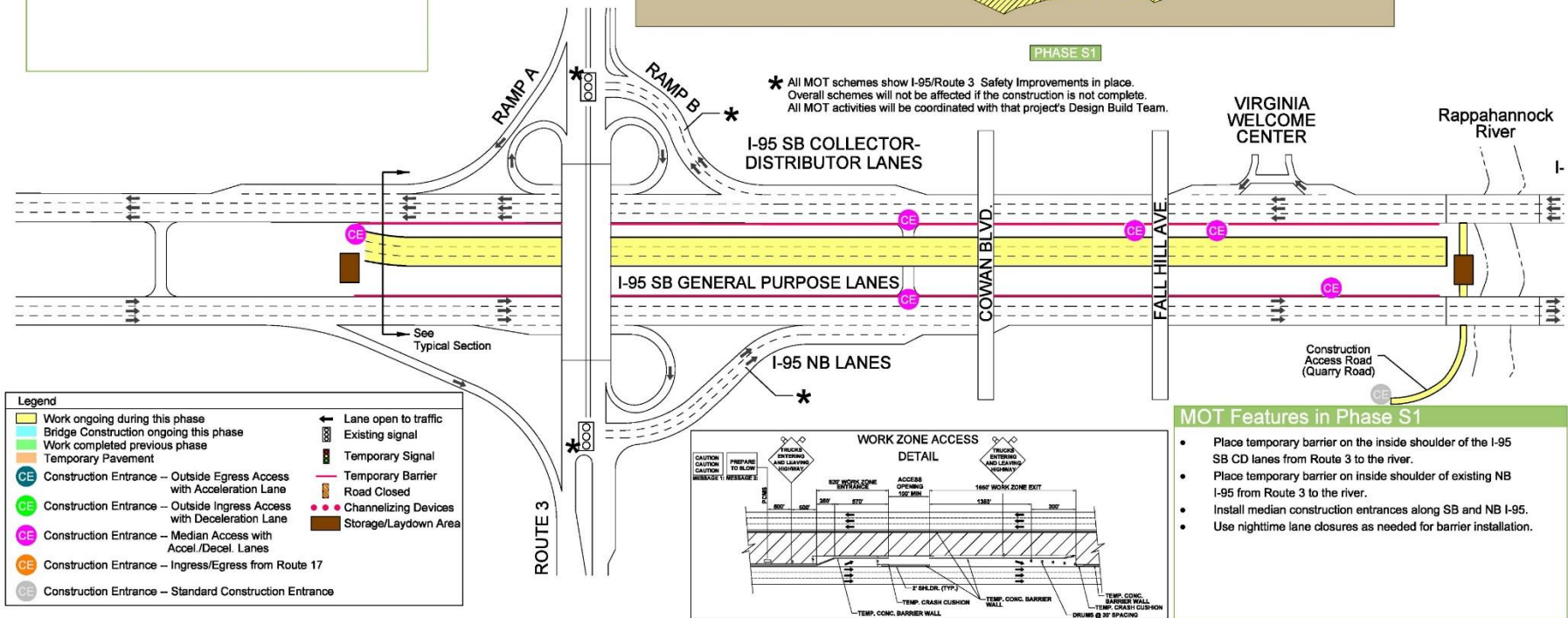
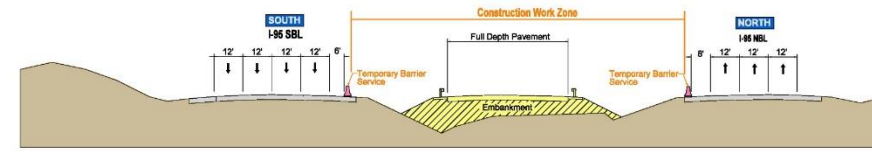
# South of the River, Phase 1 (Fall 2018 – Summer 2019)

GEOGRAPHICAL AREA 1  
SOUTH OF RAPPAHANNOCK RIVER:  
SEQUENCE OF CONSTRUCTION AND MAINTENANCE OF TRAFFIC (MOT) PHASING

PHASE S1

### Key Construction Activities in Phase S1

- Median clearing and grubbing.
- Set up erosion and sediment control.
- Construct construction access to the River.
- Grading for the GP lanes from Route 3 to the river.
- Relocate utilities.



**Legend**

	Work ongoing during this phase		Lane open to traffic
	Bridge Construction ongoing this phase		Existing signal
	Work completed previous phase		Temporary Barrier
	Temporary Pavement		Road Closed
	Construction Entrance – Outside Egress Access with Acceleration Lane		Channelizing Devices
	Construction Entrance – Outside Ingress Access with Deceleration Lane		Storage/Laydown Area
	Construction Entrance – Median Access with Accel./Decel. Lanes		
	Construction Entrance – Ingress/Egress from Route 17		
	Construction Entrance – Standard Construction Entrance		

- ### MOT Features in Phase S1
- Place temporary barrier on the inside shoulder of the I-95 SB CD lanes from Route 3 to the river.
  - Place temporary barrier on inside shoulder of existing NB I-95 from Route 3 to the river.
  - Install median construction entrances along SB and NB I-95.
  - Use nighttime lane closures as needed for barrier installation.

**Schedule**

Schedule Milestones <sup>2</sup>	2018												2019												2020												2021												2022											
	J	F	M	A	M	J	J	A	S	O	N	D	J	F	M	A	M	J	J	A	S	O	N	D	J	F	M	A	M	J	J	A	S	O	N	D	J	F	M	A	M	J	J	A	S	O	N	D	J	F	M	A	M	J	J	A	S	O	N	D
Design/ROW/Permits																																																												
I-95 South of River																																																												
Rappahannock River Bridge																																																												
I-95 North of River																																																												

1. Notice to Proceed (NTP) - 2/21/2018, Interim Milestone (IM) - 9/15/2021, Final Completion (FC) - 5/26/2022  
 Note: The schedule and key construction activities shown here is simplified for purposes of highlighting key construction activities occurring during major traffic shifts and the approximate duration of these major traffic shifts. Some activities will continue into the next MOT phase. Any discrepancies with the official project schedule are unintentional and the official project schedule supersedes durations shown here.

# What to Expect During Construction: Summer 2019 – Summer 2020 (approximately)

## Southbound I-95:

- Periodic lane closures at night
- Temporary median barrier along inside shoulder
- Narrow shoulder on southbound on-ramps at Route 3 and Route 17

## Northbound I-95:

- Periodic lane closures at night
- Temporary median barrier along inside shoulder

## Route 17:

- Periodic lane closures at night
- Narrow lanes/minimal shoulders under overpasses

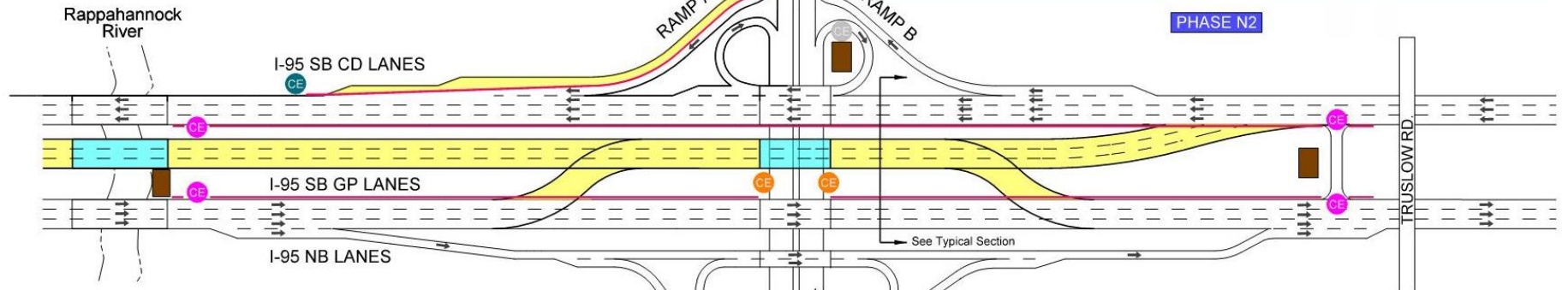
# North of the River, Phase 2 (Winter 2019 – Summer 2020)

## GEOGRAPHICAL AREA 3 NORTH OF RAPPAHANNOCK: SEQUENCE OF CONSTRUCTION AND MOT PHASING

## PHASE N2

- ### Key Construction Activities in Phase N2
- Continue constructing I-95 SB GP bridge over Route 17 and roadway approaches.
  - Construct temporary diversion route for I-95 NB traffic.
  - Continue constructing I-95 SB GP lanes.
  - Construct Rappahannock River Bridge.
  - Construct Route 17 improvements.
  - Construct outside widening of Ramp A acceleration lane (Option 1).

IN VV. SHELTON BLVD.



### Legend

Work ongoing during this phase	Lane open to traffic
Bridge Construction ongoing this phase	Existing signal
Work completed previous phase	Temporary Signal
Temporary Pavement	Temporary Barrier
Construction Entrance – Outside Egress Access with Acceleration Lane	Road Closed
Construction Entrance – Outside Ingress Access with Deceleration Lane	Channelizing Devices
Construction Entrance – Median Access with Accel./Decel. Lanes	Storage/Laydown Area
Construction Entrance – Ingress/Egress from Route 17	
Construction Entrance – Standard Construction Entrance	

- ### MOT Features in Phase N2
- Install temporary barrier and construction entrances along outside of Ramp A and acceleration lane.
  - Use nightly lane closures as necessary to install barrier.
  - Maintain other construction entrances

### Schedule

	2018												2019												2020												2021												2022																							
	J	F	M	A	M	J	J	A	S	O	N	D	J	F	M	A	M	J	J	A	S	O	N	D	J	F	M	A	M	J	J	A	S	O	N	D	J	F	M	A	M	J	J	A	S	O	N	D	J	F	M	A	M	J	J	A	S	O	N	D												
Schedule Milestones <sup>1</sup>	NTP																																				IM												FC																							
Design/ROW/Permits	Early Packages												RFC Plans																																																											
I-95 South of River													Phase S1												Phase S2												Phase S3												Phase S4																							
Rappahannock River Bridge													Access												Causeway / Bridge Construction																																															
I-95 North of River													Phase N1												Phase N2												Phase N3												Phase N4												Phase N5											

1. Notice to Proceed (NTP) - 2/21/2018, Interim Milestone (IM) - 9/15/2021, Final Completion (FC) - 5/26/2022

Note: Official project schedule is shown in Section 4.7 and shows all construction activities durations. The schedule and key construction activities shown here is simplified for purposes of highlighting key construction activities occurring during major traffic shifts and the approximate duration of these major traffic shifts. Some activities will continue into the next MOT phase. Any discrepancies with the official project schedule are unintentional and the official project schedule supersedes durations shown here.

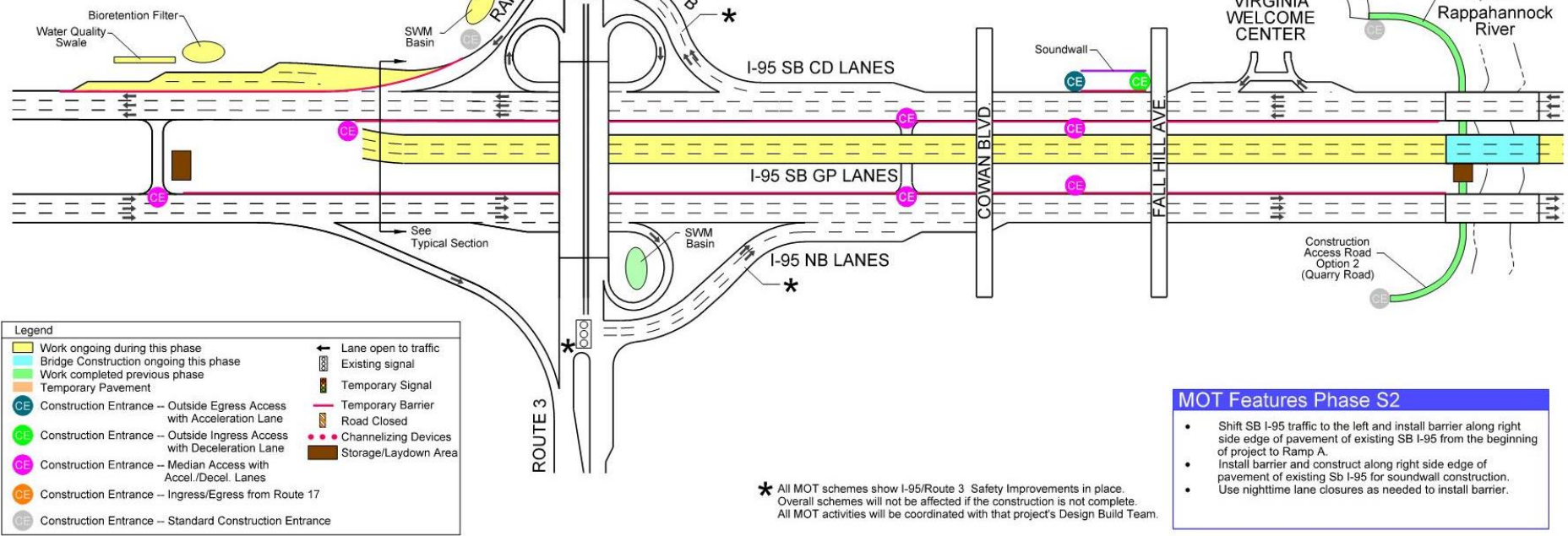
# South of the River, Phase 2 (Summer 2019 – Summer 2020)

## GEOGRAPHICAL AREA 1 SOUTH OF RAPPAHANNOCK RIVER: SEQUENCE OF CONSTRUCTION AND MOT PHASING

## PHASE S2

### Key Construction Activities Phase S2

- Construct left side shoulder improvements along existing SB I-95 in areas where traffic will be shifted.
- Construct outside future SB I-95 CD acceleration lane widening from Route 3 to beginning of project.
- Continue constructing GP lanes from Sta. 3420+00 to River.
- Construct outside improvements on Ramp A.
- Construct Rappahannock River Bridge.
- Construct soundwall.
- Construct stormwater management basin and bio-retention filters to the west of Ramp A.



### MOT Features Phase S2

- Shift SB I-95 traffic to the left and install barrier along right side edge of pavement of existing SB I-95 from the beginning of project to Ramp A.
- Install barrier and construct along right side edge of pavement of existing SB I-95 for soundwall construction.
- Use nighttime lane closures as needed to install barrier.

Schedule	2018												2019												2020												2021												2022																							
	J	F	M	A	M	J	J	A	S	O	N	D	J	F	M	A	M	J	J	A	S	O	N	D	J	F	M	A	M	J	J	A	S	O	N	D	J	F	M	A	M	J	J	A	S	O	N	D	J	F	M	A	M	J	J	A	S	O	N	D												
Schedule Milestones <sup>1</sup>	NTP																																				IM												FC																							
Design/ROW/Permits	Early Packages												RFC Plans												Phase S2												Phase S3												Phase S4																							
I-95 South of River													Phase S1												Causeway / Bridge Construction												Phase S3												Phase S4																							
Rappahannock River Bridge													Access												Causeway / Bridge Construction												Phase S3												Phase S4																							
I-95 North of River													Phase N1												Phase N2												Phase N3												Phase N4												Phase N5											

1. Notice to Proceed (NTP) - 2/21/2018, Interim Milestone (IM) - 9/15/2021, Final Completion (FC) - 5/26/2022  
 Note: Official project schedule is shown in Section 4.7 and shows all construction activities durations. The schedule and key construction activities shown here is simplified for purposes of highlighting key construction activities occurring during major traffic shifts and the approximate duration of these major traffic shifts. Some activities will continue into the next MOT phase. Any discrepancies with the official project schedule are unintentional and the official project schedule supersedes durations shown here.



# What to Expect During Construction: Summer 2020 – Summer 2021 (approximately)

## Southbound I-95:

- Periodic lane closures at night
- Temporary median barrier along inside shoulder
- I-95 southbound on/off loop ramps diverted to temporary signal on Route 17

## Northbound I-95:

- Periodic lane closures at night
- Temporary median barrier along inside shoulder
- Traffic detoured to new I-95 southbound general purpose lanes bridge

## Route 17:

- Periodic lane closures at night
- Narrow lanes/minimal shoulders under overpasses
- Temporary signal for I-95 southbound on/off loop ramps

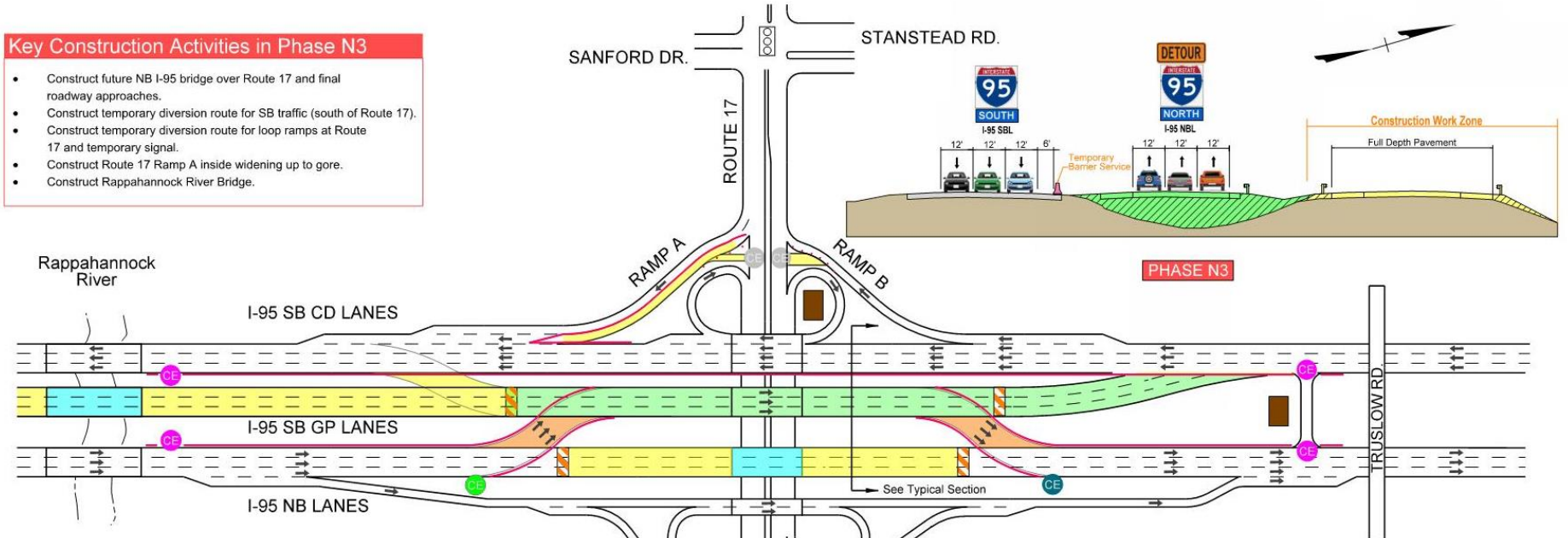
# North of the River, Phase 3 (Winter 2020 – Fall 2020)

## GEOGRAPHICAL AREA 3 NORTH OF RAPPAHANNOCK: SEQUENCE OF CONSTRUCTION AND MOT PHASING

## PHASE N3

### Key Construction Activities in Phase N3

- Construct future NB I-95 bridge over Route 17 and final roadway approaches.
- Construct temporary diversion route for SB traffic (south of Route 17).
- Construct temporary diversion route for loop ramps at Route 17 and temporary signal.
- Construct Route 17 Ramp A inside widening up to gore.
- Construct Rappahannock River Bridge.



Legend			
	Work ongoing during this phase		Lane open to traffic
	Bridge Construction ongoing this phase		Existing signal
	Work completed previous phase		Temporary Signal
	Temporary Pavement		Temporary Barrier
	Construction Entrance – Outside Egress Access with Acceleration Lane		Road Closed
	Construction Entrance – Outside Ingress Access with Deceleration Lane		Channelizing Devices
	Construction Entrance – Median Access with Accel./Decel. Lanes		Storage/Laydown Area
	Construction Entrance – Ingress/Egress from Route 17		
	Construction Entrance – Standard Construction Entrance		

### MOT Features in Phase N3

- Detour NB I-95 traffic to new I-95 SB GP Bridge.
- Shift temporary barrier along inner edge of Ramp A.
- All other existing lanes open to traffic.
- Use nightly lane closures as necessary to install barrier.

Schedule	2018												2019												2020												2021												2022														
	J	F	M	A	M	J	J	A	S	O	N	D	J	F	M	A	M	J	J	A	S	O	N	D	J	F	M	A	M	J	J	A	S	O	N	D	J	F	M	A	M	J	J	A	S	O	N	D	J	F	M	A	M	J	J	A	S	O	N	D			
Schedule Milestones <sup>1</sup>																																																															
Design/ROW/Permits																																																															
I-95 South of River																																																															
Rappahannock River Bridge																																																															
I-95 North of River																																																															

1. Notice to Proceed (NTP) - 2/21/2018, Interim Milestone (IM) - 9/15/2021, Final Completion (FC) - 5/26/2022

Note: Official project schedule is shown in Section 4.7 and shows all construction activities durations. The schedule and key construction activities shown here is simplified for purposes of highlighting key construction activities occurring during major traffic shifts and the approximate duration of these major traffic shifts. Some activities will continue into the next MOT phase. Any discrepancies with the official project schedule are unintentional and the official project schedule supersedes durations shown here.

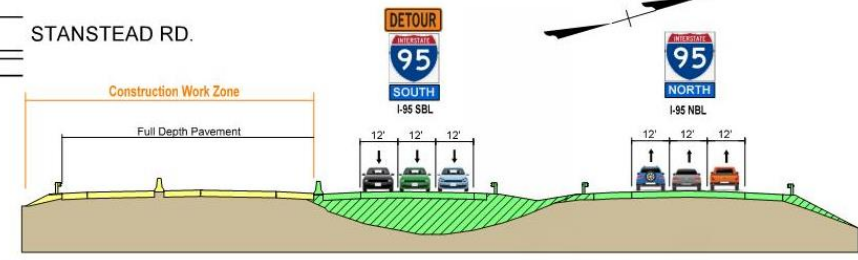
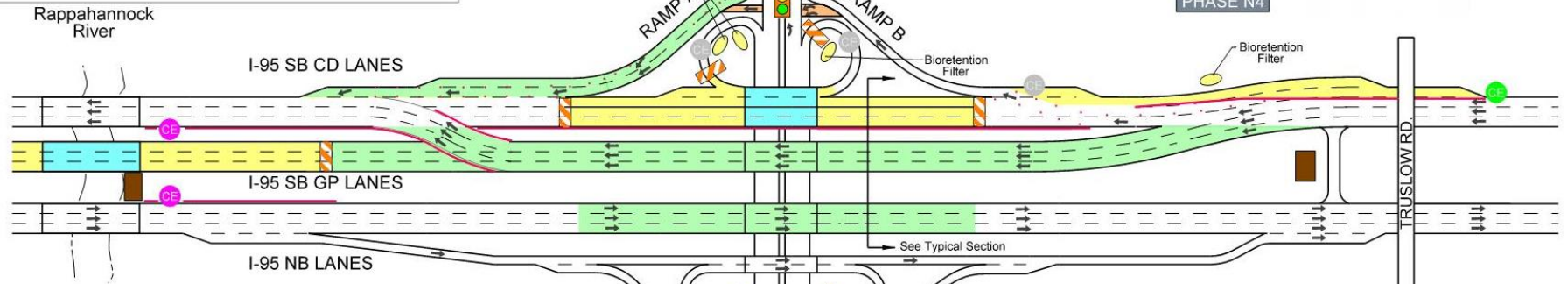
# North of the River, Phase 4 (Fall 2020 – Summer 2021)

## GEOGRAPHICAL AREA 3 NORTH OF RAPPAHANNOCK: SEQUENCE OF CONSTRUCTION AND MOT PHASING

## PHASE N4

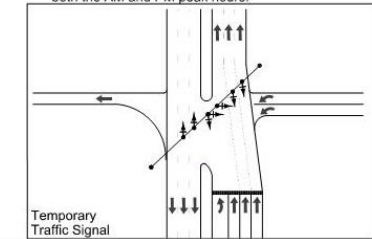
### Key Construction Activities in Phase N4

- Construct SB I-95 CD bridge and roadway approaches and ramp connections (Base & Option 1).
- Construct SB I-95 CD lanes outside widening north of Route 17 (Option 1).
- Remove NB diversion route.
- Continue constructing Rappahannock River Bridge.
- Construct ramp gores for Ramp A and Ramp B (Once outside widening is complete).
- Mill and overlay existing lanes and final pavement marking north of Sta. 3595+00.
- Construct bioretention filters.



Legend	
<span style="background-color: yellow; border: 1px solid black; display: inline-block; width: 15px; height: 10px;"></span> Work ongoing during this phase	Lane open to traffic
<span style="background-color: cyan; border: 1px solid black; display: inline-block; width: 15px; height: 10px;"></span> Bridge Construction ongoing this phase	Existing signal
<span style="background-color: green; border: 1px solid black; display: inline-block; width: 15px; height: 10px;"></span> Work completed previous phase	Temporary Signal
<span style="background-color: orange; border: 1px solid black; display: inline-block; width: 15px; height: 10px;"></span> Temporary Pavement	Temporary Barrier
<span style="border: 1px solid blue; border-radius: 50%; padding: 2px;">CE</span> Construction Entrance – Outside Egress Access with Acceleration Lane	Road Closed
<span style="border: 1px solid green; border-radius: 50%; padding: 2px;">CE</span> Construction Entrance – Outside Ingress Access with Deceleration Lane	Channelizing Devices
<span style="border: 1px solid purple; border-radius: 50%; padding: 2px;">CE</span> Construction Entrance – Median Access with Accel./Decel. Lanes	Storage/Laydown Area
<span style="border: 1px solid orange; border-radius: 50%; padding: 2px;">CE</span> Construction Entrance – Ingress/Egress from Route 17	
<span style="border: 1px solid grey; border-radius: 50%; padding: 2px;">CE</span> Construction Entrance – Standard Construction Entrance	

The Wagman Team has analyzed the temporary signal operations for year 2020 traffic volumes and found the temporary signal to operate at LOS C in both the AM and PM peak hours.



### MOT Features in Phase N4

- Switch NB I-95 traffic back to reconstructed NB Bridge.
- Detour SB I-95 traffic to new I-95 SB GP Bridge.
- Close Route 17 SB loop ramps and detour traffic through temporary signal.
- Shift Ramp B traffic towards the median of SB I-95 and then back to the ramp, use a temporary barrier as necessary to protect work zone.
- Merge Ramp A ramp traffic into a single lane and then merge with detoured SB I-95 traffic after it returns to existing lanes.
- Once outside widening is complete, shift Ramp B traffic to the outside on new pavement.
- Use nightly lane closures as necessary.

Schedule	2018												2019												2020												2021												2022																							
	J	F	M	A	M	J	J	A	S	O	N	D	J	F	M	A	M	J	J	A	S	O	N	D	J	F	M	A	M	J	J	A	S	O	N	D	J	F	M	A	M	J	J	A	S	O	N	D	J	F	M	A	M	J	J	A	S	O	N	D												
Schedule Milestones <sup>1</sup>	NTP																																				IM												FC																							
Design/ROW/Permits	Early Packages												RFC Plans																																																											
I-95 South of River													Phase S1												Phase S2												Phase S3												Phase S4																							
Rappahannock River Bridge													Access												Causeway / Bridge Construction																																															
I-95 North of River													Phase N1												Phase N2												Phase N3												Phase N4												Phase N5											

1. Notice to Proceed (NTP) - 2/21/2018, Interim Milestone (IM) - 9/15/2021, Final Completion (FC) - 5/26/2022

Note: Official project schedule is shown in Section 4.7 and shows all construction activities durations. The schedule and key construction activities shown here is simplified for purposes of highlighting key construction activities occurring during major traffic shifts and the approximate duration of these major traffic shifts. Some activities will continue into the next MOT phase. Any discrepancies with the official project schedule are unintentional and the official project schedule supersedes durations shown here.

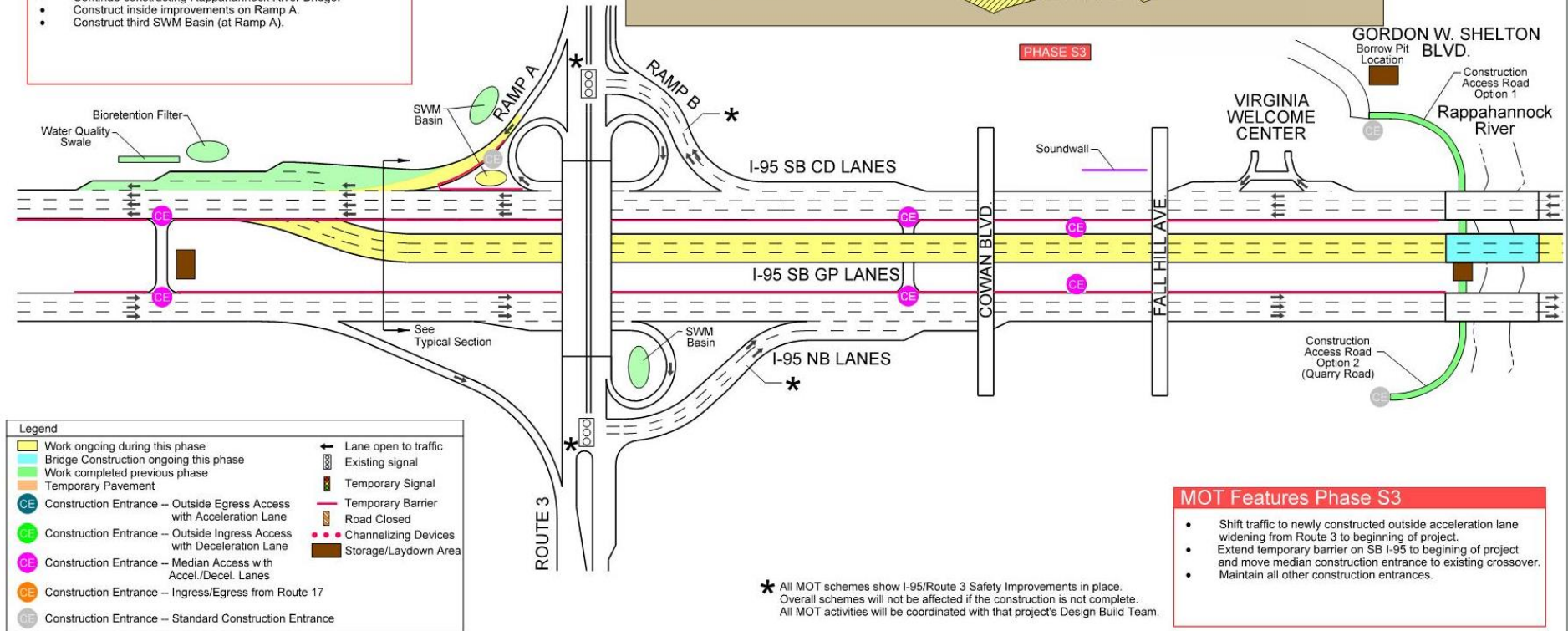
# South of the River, Phase 3 (Summer 2020 – Summer 2021)

## GEOGRAPHICAL AREA 1 SOUTH OF RAPPAHANNOCK RIVER: SEQUENCE OF CONSTRUCTION AND MOT PHASING

## PHASE S3

### Key Construction Activities Phase S3

- Continue constructing SB GP lanes in median from Sta. 3420+00 to Rappahannock River.
- Construct SB GP lanes merge with SB CD Lanes.
- Continue constructing Rappahannock River Bridge.
- Construct inside improvements on Ramp A.
- Construct third SWM Basin (at Ramp A).



- ### MOT Features Phase S3
- Shift traffic to newly constructed outside acceleration lane widening from Route 3 to beginning of project.
  - Extend temporary barrier on SB I-95 to beginning of project and move median construction entrance to existing crossover.
  - Maintain all other construction entrances.
- \* All MOT schemes show I-95/Route 3 Safety Improvements in place. Overall schemes will not be affected if the construction is not complete. All MOT activities will be coordinated with that project's Design Build Team.

Schedule	2018												2019												2020												2021												2022																							
	J	F	M	A	M	J	J	A	S	O	N	D	J	F	M	A	M	J	J	A	S	O	N	D	J	F	M	A	M	J	J	A	S	O	N	D	J	F	M	A	M	J	J	A	S	O	N	D	J	F	M	A	M	J	J	A	S	O	N	D												
Schedule Milestones <sup>1</sup>	NTP																																				IM												FC																							
Design/ROW/Permits	Early Packages												RFC Plans																																																											
I-95 South of River													Phase S1												Phase S2												Phase S3												Phase S4																							
Rappahannock River Bridge													Access												Causeway / Bridge Construction																																															
I-95 North of River													Phase N1												Phase N2												Phase N3												Phase N4												Phase N5											

<sup>1</sup> Notice to Proceed (NTP) - 2/21/2018, Interim Milestone (IM) - 9/15/2021, Final Completion (FC) - 5/26/2022  
 Note: Official project schedule is shown in Section 4.7 and shows all construction activities durations. The schedule and key construction activities shown here is simplified for purposes of highlighting key construction activities occurring during major traffic shifts and the approximate duration of these major traffic shifts. Some activities will continue into the next MOT phase. Any discrepancies with the official project schedule are unintentional and the official project schedule supersedes durations shown here.

# What to Expect During Construction: Summer 2021 – Summer 2022 (approximately)

## Southbound I-95:

- **Periodic lane closures at night**
- **Temporary median barrier along inside shoulder of CD lanes**
- **I-95 southbound general purpose lanes and new southbound bridges open to traffic**

## Northbound I-95:

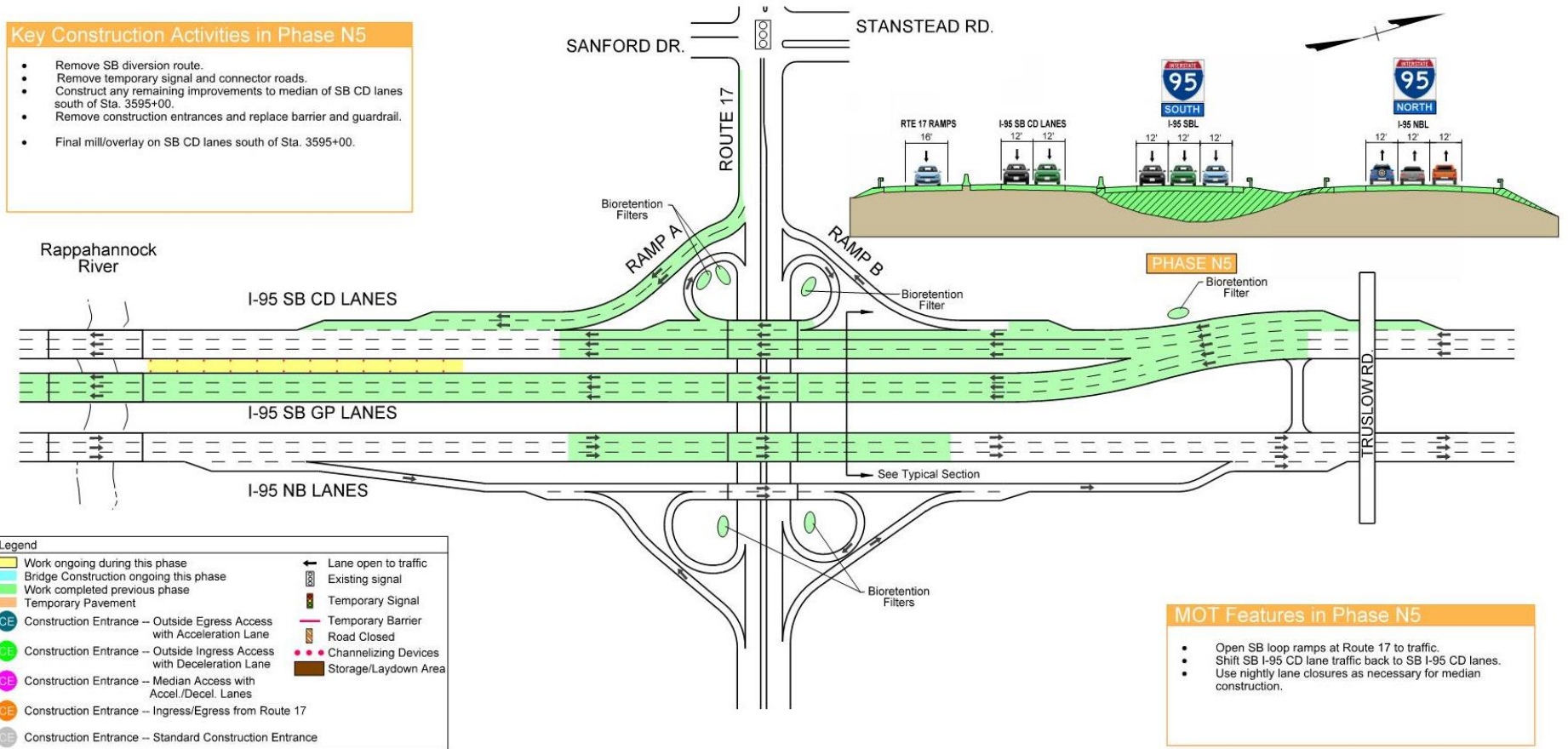
- **Traffic detoured back to new I-95 northbound general purpose lanes bridge**

## Route 17:

- **Temporary signal removed, no impacts**

# North of the River, Phase 5 (Summer 2021)

- Key Construction Activities in Phase N5**
- Remove SB diversion route.
  - Remove temporary signal and connector roads.
  - Construct any remaining improvements to median of SB CD lanes south of Sta. 3595+00.
  - Remove construction entrances and replace barrier and guardrail.
  - Final mill/overlay on SB CD lanes south of Sta. 3595+00.



**Schedule**

	2018												2019												2020												2021												2022																							
	J	F	M	A	M	J	J	A	S	O	N	D	J	F	M	A	M	J	J	A	S	O	N	D	J	F	M	A	M	J	J	A	S	O	N	D	J	F	M	A	M	J	J	A	S	O	N	D	J	F	M	A	M	J	J	A	S	O	N	D												
Schedule Milestones <sup>1</sup>	NTP																																				IM												FC																							
Design/ROW/Permits	Early Packages												RFC Plans																																																											
I-95 South of River													Phase S1												Phase S2												Phase S3												Phase S4																							
Rappahannock River Bridge													Access												Causeway / Bridge Construction																																															
I-95 North of River													Phase N1												Phase N2												Phase N3												Phase N4												Phase N5											

<sup>1</sup> Notice to Proceed (NTP) - 2/21/2018, Interim Milestone (IM) - 9/15/2021, Final Completion (FC) - 5/26/2022  
 Note: Official project schedule is shown in Section 4.7 and shows all construction activities durations. The schedule and key construction activities shown here is simplified for purposes of highlighting key construction activities occurring during major traffic shifts and the approximate duration of these major traffic shifts. Some activities will continue into the next MOT phase. Any discrepancies with the official project schedule are unintentional and the official project schedule supersedes durations shown here.

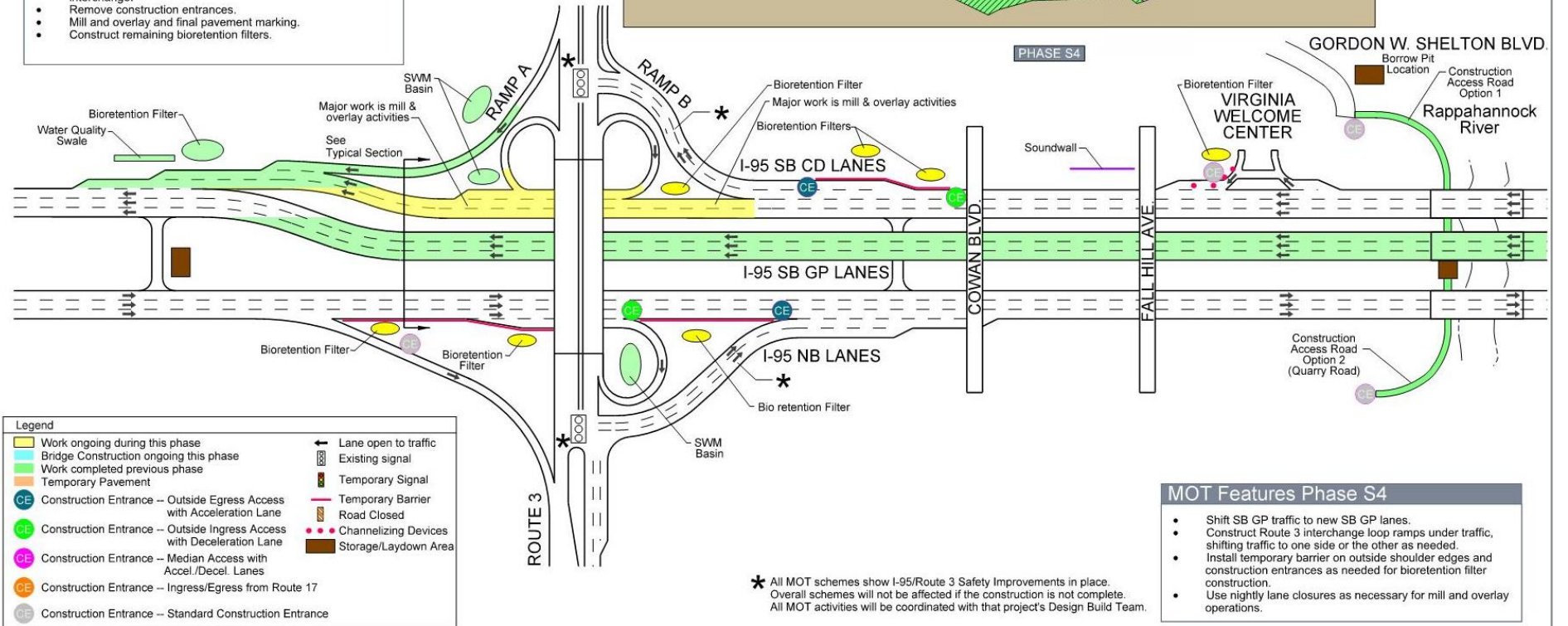
# South of the River, Phase 4 (Summer 2021 – Summer 2022)

## GEOGRAPHICAL AREA 1 SOUTH OF RAPPAHANNOCK RIVER: SEQUENCE OF CONSTRUCTION AND MOT PHASING

## PHASE S4

### Key Construction Activities Phase S4

- Remove construction access road to River.
- Construct Route 3 interchange loop ramp improvements.
- Construct any remaining improvements to SB CD lanes at the interchange.
- Remove construction entrances.
- Mill and overlay and final pavement marking.
- Construct remaining bioretention filters.

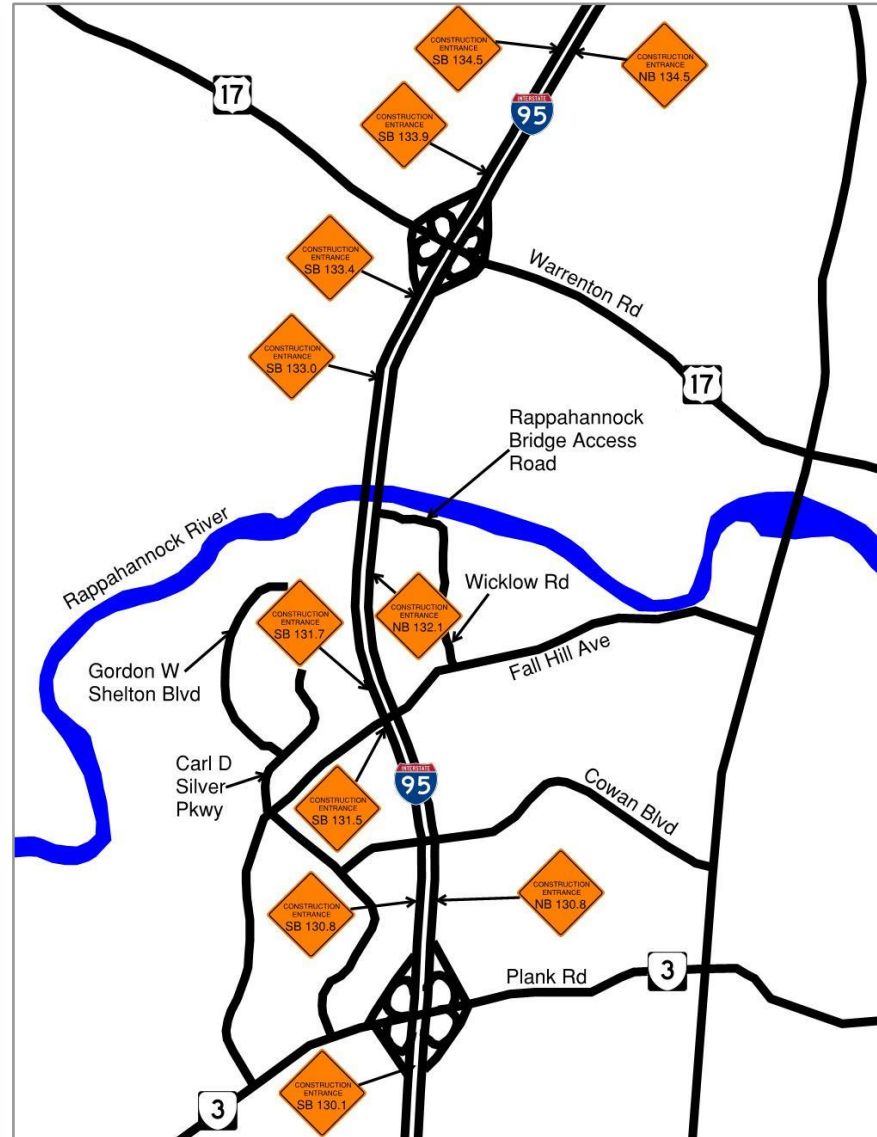


Schedule	2018												2019												2020												2021												2022																							
	J	F	M	A	M	J	J	A	S	O	N	D	J	F	M	A	M	J	J	A	S	O	N	D	J	F	M	A	M	J	J	A	S	O	N	D	J	F	M	A	M	J	J	A	S	O	N	D	J	F	M	A	M	J	J	A	S	O	N	D												
Schedule Milestones <sup>1</sup>	NTP																																																IM												FC											
Design/ROW/Permits	Early Packages												RFC Plans																																																											
I-95 South of River													Phase S1												Phase S2												Phase S3												Phase S4																							
Rappahannock River Bridge													Access												Causeway / Bridge Construction																																															
I-95 North of River													Phase N1												Phase N2												Phase N3												Phase N4												Phase N5											

1. Notice to Proceed (NTP) - 2/21/2018, Interim Milestone (IM) - 9/15/2021, Final Completion (FC) - 5/26/2022

Note: Official project schedule is shown in Section 4.7 and shows all construction activities durations. The schedule and key construction activities shown here is simplified for purposes of highlighting key construction activities occurring during major traffic shifts and the approximate duration of these major traffic shifts. Some activities will continue into the next MOT phase. Any discrepancies with the official project schedule are unintentional and the official project schedule supersedes durations shown here.

# Construction Access Points



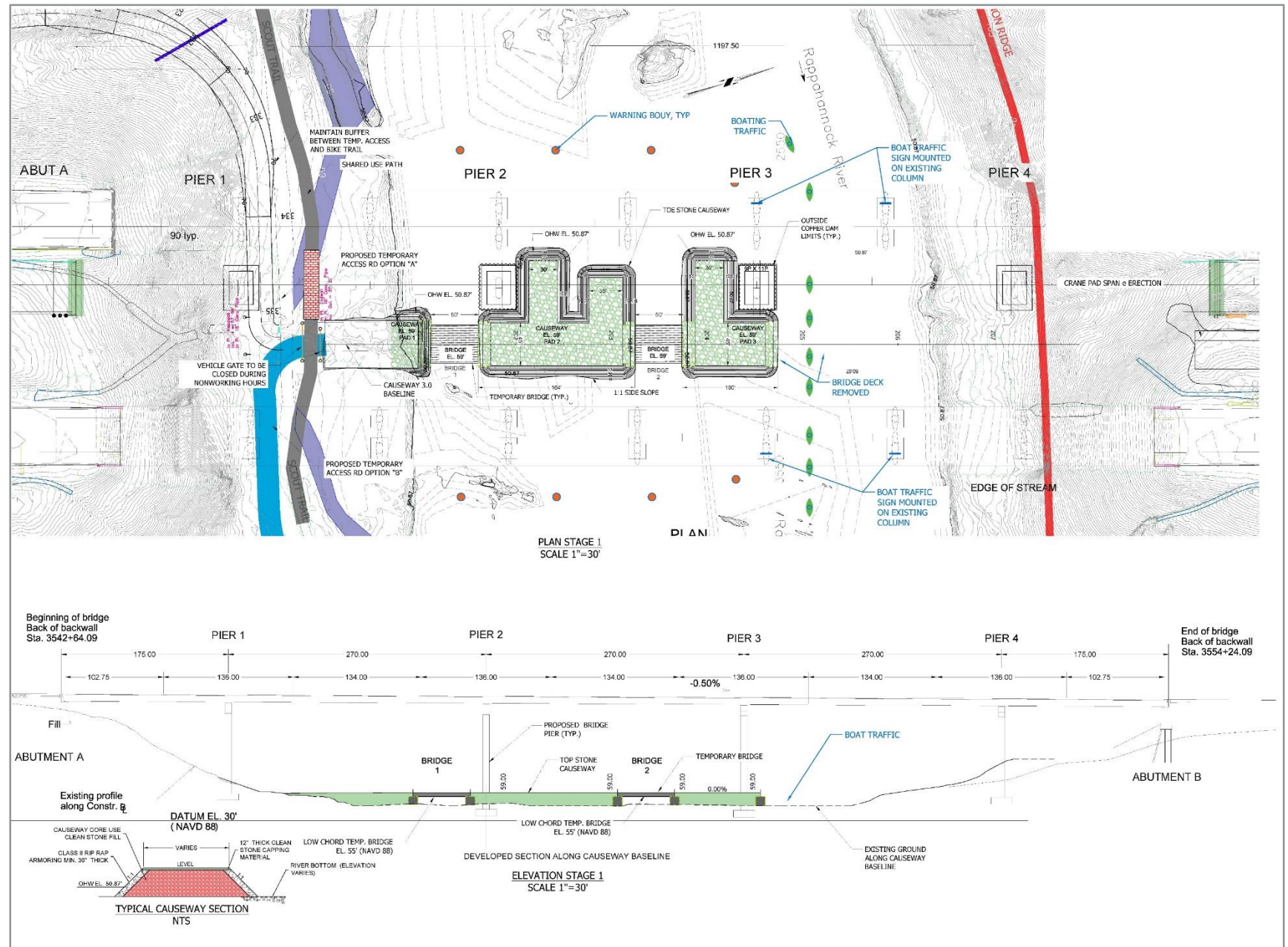


# What to Expect During Construction:

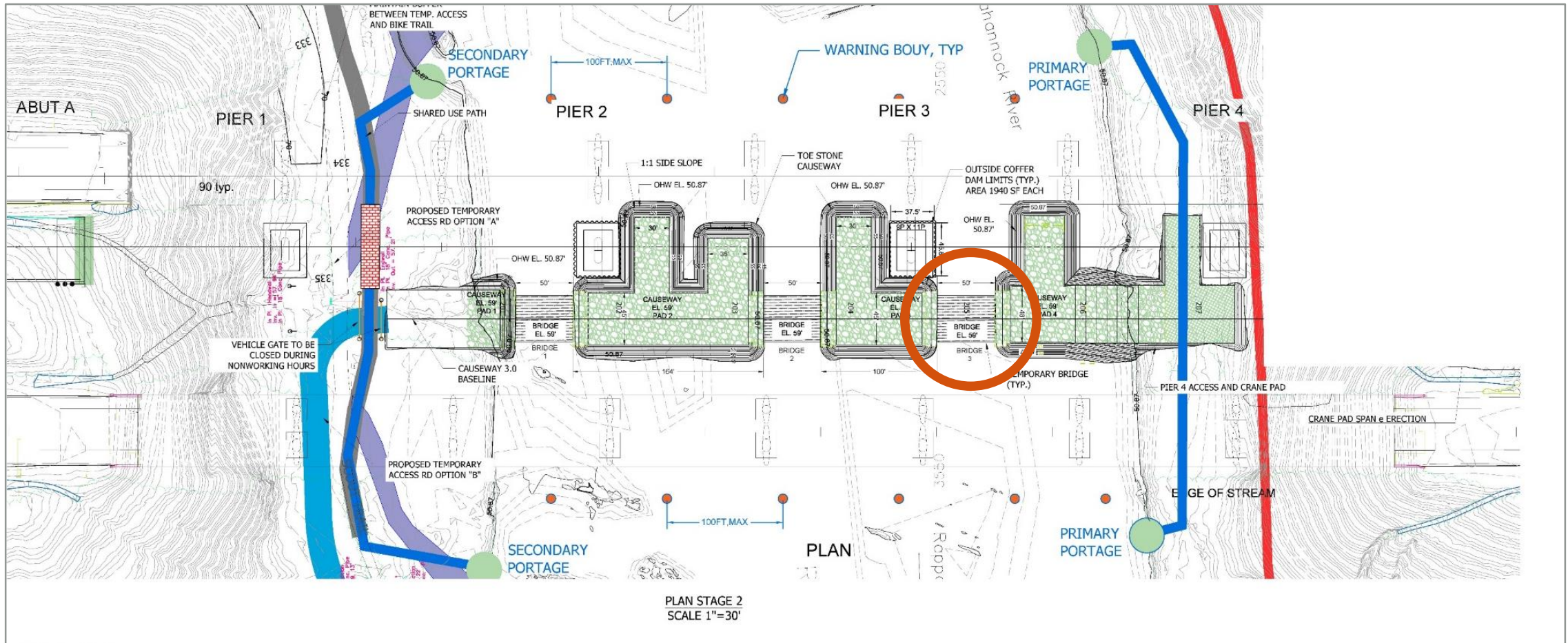
## Rappahannock River Bridge

# River/Recreation Access During Construction

Winter 2019 –  
Spring 2021



# River/Recreation Access During Construction



**Temporary bridge in north channel is for intermittent mobilization activities, channel will remain open majority of time**

# Project Communication

- **No surprises philosophy**
- **Communications plan includes:**
  - **Pardon Our Dust meetings before all major construction phases**
  - **Message boards**
  - **Contractor point of contact**
  - **Project website: [www.improve95.org](http://www.improve95.org)**
  - **Email newsletters, social media**
  - **One-on-one Customer Service**
  - **Paid, local, radio, advertising**

# Project Communication

- **Key Audiences:**
  - **Emergency responders**
  - **Residents**
  - **Businesses**
  - **River and recreational users**
  - **I-95 travelers and commuters**

# Questions?



# Stay Informed

We encourage you to stay informed, ask questions, and share your feedback at:  
[www.improve95.org](http://www.improve95.org)

Sign up for email news/updates and/or submit a question/comment



[www.511virginia.org](http://www.511virginia.org)



VDOT  
Fredericksburg  
District Facebook  
Group



Follow us on  
Twitter  
@VaDOTFRED

# Contact Information



**Robert G. Ridgell, P.E., VDOT**

**[Robert.ridgell@vdot.virginia.gov](mailto:Robert.ridgell@vdot.virginia.gov)**

**(540) 903-8692**

**Kelly Hannon, Communications Manager, VDOT**

**[kelly.hannon@vdot.virginia.gov](mailto:kelly.hannon@vdot.virginia.gov)**

**(540) 374-3344**



**David Lyle, DBIA, Wagman**

**[dwlyle@wagman.com](mailto:dwlyle@wagman.com)**

**(804) 631-0003**

**Rodney Hayzlett, P.E., JMT**

**[rhayzlett@jmt.com](mailto:rhayzlett@jmt.com)**

**(804) 267-1269**